



TYPE: AWLL-JR



AWLL-JR Aluminium Compact Wireless Load Link

Description

The LCM AWLL-JR load link series have been designed for lifting and weighing in applications where there is restricted lifting height, but where higher accuracy than can be provided by a load shackle is required. Being manufactured from aluminium alloy to minimise weight makes them ideal for mobile use, and they are also ideal for proof testing and monitoring loads on hoists and rigging, especially in entertainment and events applications.

The AWLL-JR is battery powered and utilised standard AAA alkaline batteries which are readily available and low cost. The AWLL-JR range is simple to install and has a high safety factor (5:1) to provide safe and accurate measurements during critical lifting and load monitoring operations.

The AWLL-JR is supplied as standard without any additional wireless devices to enable greater flexibility with the configuration and ordering of the product. The AWLL-JR can be used with any of the T24 range of wireless instrumentation, whether this be for a simple display system using the T24-HS-LS or T24-HR, or more complex systems using multiple load cells and multiple wireless devices.

For more sophisticated systems, including datalogging or monitoring/reporting requirements, we are able to offer a robust tablet PC with installed software for use with single or multiple load cells. Our sales team will be happy to discuss the best wireless system configuration to suit your requirements.

Specification

Rated load (tonne)	1, 2, 3.25, 4.75
Proof load	150% of rated load
Safety factor	>500% of rated load
Accuracy	<±0.25% of reading
Power supply	2 x AAA alkaline batteries
Battery life	>300 hours (continuous use, with 1.2Ah batteries)
Transmission range	>300 metres (clear line of sight)
Radio frequency	2.4GHz
Update Rate	3 times per second
Operating temperature range	-20 to +50°C
Compensated temperature range	-10 to +50°C
Zero temperature coefficient	<±0.01% of rated load/°C
Span temperature coefficient	<±0.01% of rated load/°C
Environmental protection level	IP54

Available Options

- Wireless overload alarm module
- Wireless base station with analogue output
- Wireless signal booster
- Multiple wireless load cell controller software
- Wireless slave display
- Crosby shackle supply

Features

- Ranges from 1000 to 4750kg
- Lightweight & compact aluminium construction
- High accuracy
- Supplied with carry case
- License Free 2.4GHz radio
- Internal antennae
- 300 hours battery life using standard AAA batteries
- Can be supplied with various bespoke telemetry and/or software packages

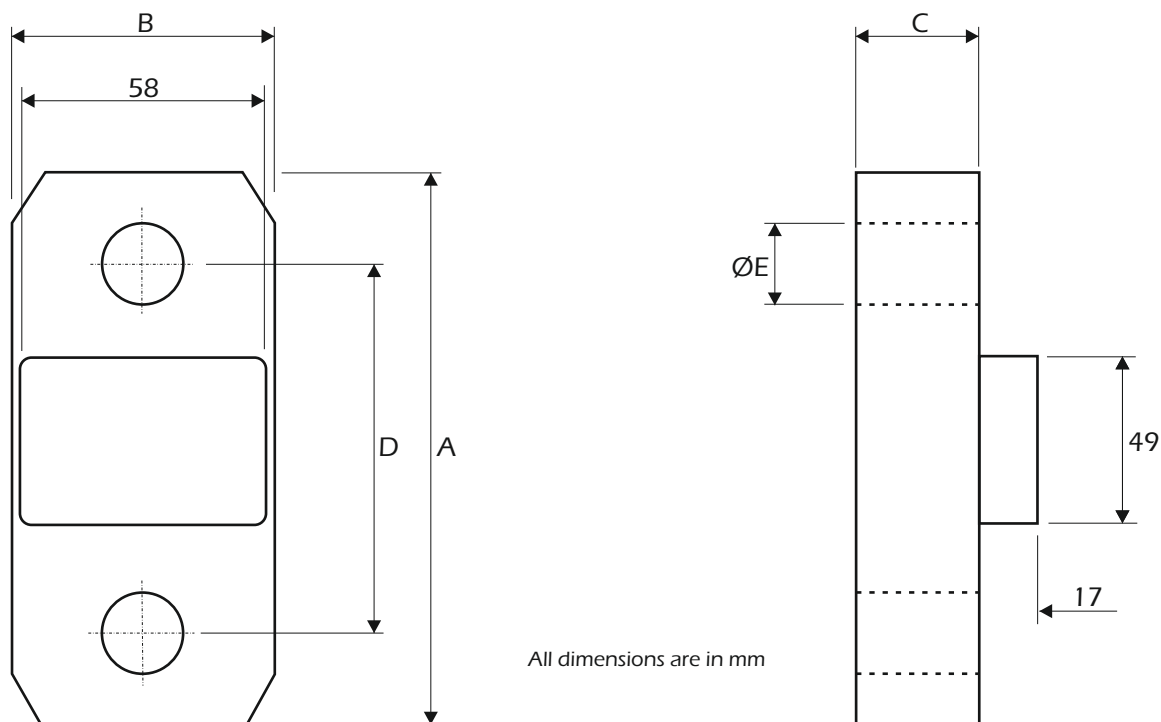
Typical Applications

- Underhook crane weighing
- Cable tension monitoring
- Crane/hoist proof loading
- Water weights calibration
- Warehouse despatch weighing



AWLL-JR Aluminium Compact Wireless Load Link

Dimensions



Rating (tonne)	A	B	C	D	ØE	Resolution (tonne)	Weight (kg)
1	140	63	18.5	95	17	0.005	0.4
2	140	63	18.5	95	17	0.01	0.4
3.25	148	63	24	95	20	0.01	0.6
4.75	148	63	27	95	24	0.02	0.6

Compatible Load Shackles

Rating (tonne)	Crosby Load Shackles	Van Beest Load Shackles
1	1te Crosby G-2130	1te Green Pin G4163
2	2te Crosby G-2130	2te Green Pin G4163
3.25	3.25te Crosby G-2130	3.25te Green Pin G4163
4.75	4.75te Crosby G-2130	4.75te Green Pin G4163

A summary of available wireless devices that can be used to enhance the AWLL-JR in your application can be viewed on the next page of this datasheet.

For further assistance on system configuration, please call us or email your requirements to sales@lcm systems.com.

AWLL-JR Aluminium Compact Wireless Load Link



Wireless Receivers/Display Options



T24-HS-LS
Simple wireless display for connecting to 1 load cell



T24-HA
Wireless display for connection to up to 12 load cells



T24-HR
Wireless display for connecting to multiple load cells



X24-HD
ATEX Wireless display for connection to up to 24 load cells

Wireless Base Station Options



T24-BSu
Wireless USB connected base station



T24-Bsd
Wireless compact USB connected dongle base station



T24-BSue
Wireless USB extended range base station



T24-BSi
Wireless USB, RS485, RS232 connected base station

Wireless Output Module Options



T24-RM1
Wireless relay, switch output module



T24-SO
Wireless serial ASCII output module



T24-AO1
Wireless analogue output module



T24-PR1
Wireless surface mounting tally roll printer



T24-AR
Wireless range extender repeater module

Wireless Software Options



LCM Systems are able to offer various software solutions for our wireless range of load cells. We encourage you to speak to our sales team to discuss any standalone software requirements you may have.

The solutions we regularly offer include centre of gravity weighing and reporting, multiple load cell display & reporting and PC based datalogging. Other solutions can also be offered.

For more detailed information regarding wireless instrumentation visit www.lcmsystems.com/T24

www.lcmsystems.com

LCM Systems Ltd

Unit 15, Newport Business Park, Barry Way
Newport, Isle of Wight PO30 5GY UK
Tel: +44 (0)1983 249264
sales@lcm systems.com
www.lcm systems.com

LCM Systems (România)

Strada Ștefan Cel Mare 26a,
Tunari, cod.077 180, Ilfov, România
Tel: +40 (0)77 4641899
ro@lcm systems.com
www.lcm systems.ro

Due to continual product development, LCM Systems Ltd reserves the right to alter product specifications without prior notice.

Issue No. 1

Issue date: 08/11/2021

APPROVED

(unapproved if printed)